

Media

Iomega ZIP — 100MB, 250MB
Iomega Jaz — 1GB, 2GB
5 1/4 inch MO — Mac Formatted
CD-R, CD-RW

FTP File Transfer

Upload files to <ftp://ftp.butlercp.com/incoming/>.

Macintosh File Formats

QuarkXPress
Adobe InDesign
Adobe Illustrator
Adobe PageMaker
Multi-Ad Creator
Adobe Acrobat PDF
EPS
TIFF

Windows File Formats

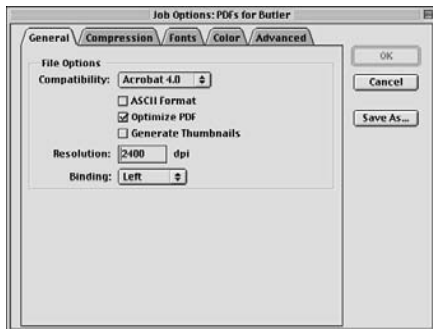
Adobe Acrobat PDF
EPS (w/embedded fonts)
TIFF

Digital Film Formats

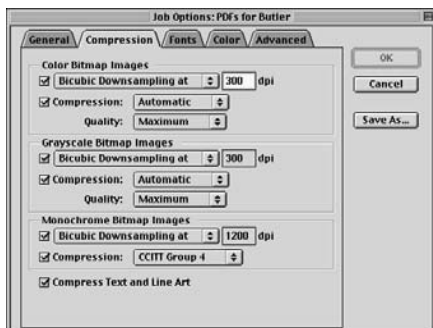
TIFF/IT-P1
DCS 2.0
RAMPAGE Export

*Butler Color Press
Prepress Dept.
119 Bonnie Drive
Butler, PA 16002*

*Phone: 724-283-9132
Fax: 724-283-3039
e-mail: prepress@butlercp.com
ftp: [ftp.butlercp.com](ftp://ftp.butlercp.com)*



Distiller Job Options — General



Distiller Job Options — Compression

Compatibility

Compatibility should be set to Acrobat 4.0.

ASCII Format

Uncheck ASCII Format to create smaller files.

Optimize PDF

Check optimize PDF to create smaller files.

Generate Thumbnails

Uncheck this option to create smaller files.

Resolution

This setting should match the RIP resolution of the film output device. (Set this to 2400 DPI if you are unsure of the RIP resolution.)

Binding

Select Left Binding.

Color Bitmap Images

Choose bicubic downsampling at 300 DPI
Select automatic compression at maximum quality.

Grayscale Bitmap Images

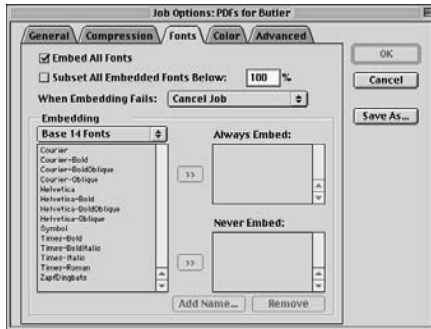
Choose bicubic downsampling at 300 DPI
Select automatic compression at maximum quality.

Monochrome Bitmap Images

Check bicubic downsampling at 1200 DPI
Select CCITT Group 4 compression.

Compress Text and Line Art

This option should be checked.



Distiller Job Options — Fonts

Embed All Fonts

This option must be checked.

TrueType fonts will be replaced with Courier unless they are embedded in the PostScript files which are being distilled.

Subset All Embedded Fonts Below

Please deselect this option. We prefer to have the entire character set embedded.

When Embedding Fails

Select cancel job.

If TrueType fonts are not embedded in the PostScript file Distiller will substitute Courier and continue. This setting will cancel the job only if PostScript fonts are missing.

Embedding

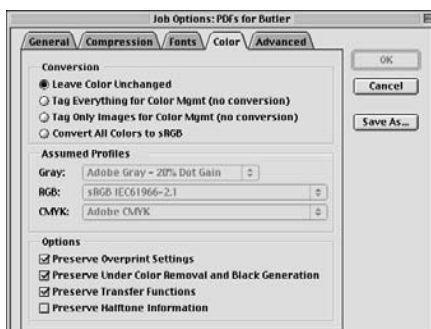
Leave this setting at the default — Base 14 Fonts.

Always Embed

There is usually no need to add fonts to this list.

Never Embed

If there are any font names in this list, select the name(s) and click the Remove button.



Distiller Job Options — Color

Conversion

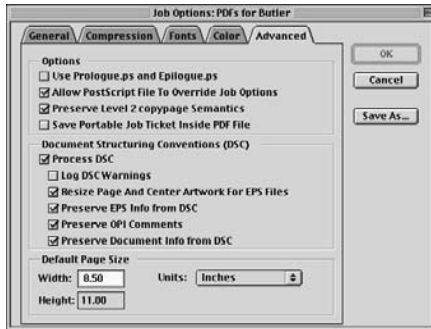
Leave Color unchanged should be selected.

Assumed Profiles

All three options under this heading should be “grayed out”. If not, check to be sure you’ve selected “Leave Color Unchanged” in the conversion preferences.

Options

All options except Preserve Halftone Information should be checked.



Distiller Job Options — Advanced

Use Prologue.ps and Epilogue.ps

Uncheck Prologue.ps/Epilogue.ps.

Allow PostScript File To Override Job Options

This item should be checked.

Preserve Level 2 Copping Semantics

This item should be checked.

Save Portable Job Ticket Inside PDF File

Uncheck this item.

Process DSC

Process DSC should be checked.

Log DSC Warnings

Uncheck Log DSC Warnings.

Resize Page and Center Artwork for EPS Files

This item should be checked.

Preserve EPS Info from DSC

Preserve EPS Info should be checked.

Preserve OPI Comments

Preserve OPI Comments should be checked.

Preserve Document Info from DSC

Preserve Document Info should be checked.

Default Page Size

This value is unimportant when distilling QuarkXPress pages if all other options are set correctly.

QuarkXPress pages saved as EPS will be sized correctly regardless of the Default Page Size setting if the Resize Page and Center Artwork option is checked. The bounding box of the EPS file will determine the page size.

PostScript files written with LaserWriter 8 will be sized according to the Paper Width selected in the Page Setup dialog regardless of the Default Page Size in this window.